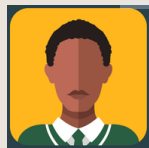




## Project Overview

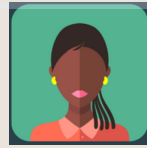
inSupply Health used design-thinking to develop IMPACT Team learning packages for health workers in Kenya and Tanzania interested in deepening their supply chain and data use competencies.

The modular packages target 4 core sets of competencies, processes and practices embodied in the role profiles below that support effective data use. The modules are designed to be self-paced and accessible on mobile phones, tablets and laptops to accommodate the needs and lifestyles of busy health workers.



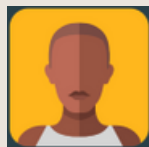
### Organising Otto

Calling meetings, ensuring logistics are in place, creating an agenda, taking notes, and delegating tasks.



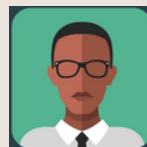
### Data Wiz Diana

Calculating and visualizing indicators, analyzing and interpreting data for non-data people, advocating for data quality because it affects supply chain decisions.



### Supply Chain Sam

Figuring out logistics cycles and supply chain processes, measuring the performance of supply chain, thinking critically around challenges affecting commodity availability to suggest supply chain specific solutions.

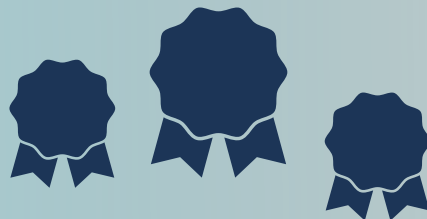


### Peter Problem Solver

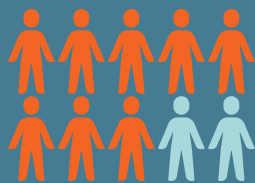
Prioritizing challenges, conducting root cause analysis, brainstorming on solutions, steering the team towards actionable and practical next steps.

## CERTIFICATES

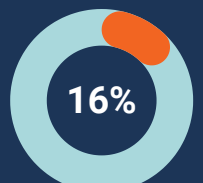
# 388



A total of 388 competency certificates in these key aspects of data use have been issued to 96 IMPACT Team members across 38 IMPACT Teams.

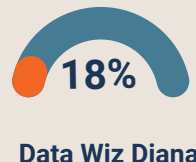
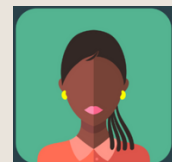
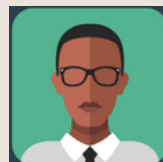
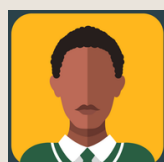
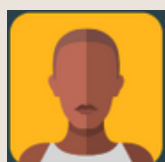


**Uptake in Kenya - 326**



**Uptake in Tanzania - 62**

### Uptake of IMPACT Team virtual learning packages per persona



"It has brought teamwork on board. We have been able to go through the learning packages as a sub-county health management team, and they have built our capacity. Even the theoretical part of it has really helped, and so we have seen the impact it has had on the team in terms of managerial skills."

SUB COUNTY MOH-SIAYA

"I am one happy IMPACT team member. Having gone through supply chain and organization training modules, they are a wonderful set of training packages."

DR. LASOI-CHERENGANY SUB COUNTY PHARMACIST, TRANSNZOIA

